



2024-2025

YEAR 8 INTO 9 STAGE 5 COURSE SELECTION GUIDE

Course descriptions



MAHS ☆



Mount Austin High School
Respect - Responsibility - Commitment

Staff Members

School Senior Executive

PRINCIPAL

Michelle Waugh

DEPUTY PRINCIPALS

Justin Graham – Wellbeing (Years 7 & 9)

Scott Paterson – Operations (Years 10 & 12)

Paula Shumack – Curriculum (Years 8 & 11)

Head Teachers

ENGLISH & LANGUAGES

Nathan Brookes

MATHEMATICS

Amilia Gray

SCIENCE

Aleasha Lyons

HSIE

Rose Mead

CAPA

John Clancy

TAS

Dustin Bradshaw

Student Advisors

YEAR 9 ADVISOR

Holly Moore

YEAR 8 ADVISOR

Daina Wiencke

CAREERS ADVISOR

Susan Huntly

PDHPE

Michael Dare

SPECIAL EDUCATION

Cameron Abood

LEARNING & SUPPORT

Emma Heerey

WELLBEING

Telesia Sakaio

ADMINISTRATION

Karl Streckfuss

INSTRUCTIONAL LEADER

ABORIGINAL EDUCATION

Anthony Hogan

Mount Austin High School

Respect – Responsibility – Commitment



Stage 5 Course Selection Guide 2024-2025

Contents

From the Principal's Desk	4
Introduction	5
Record of School Achievement (RoSA)	5
Subject Selections Process	6
Fees	6
Classes and Timetables	7
High Potential Classes	7
Life Skills - Program of Study	7
Sport	7
Assessment	8
Changing Courses	8
Mandatory Subjects:	
ENGLISH – MATHEMATICS	10
SCIENCE – PDHPE	11
HISTORY - GEOGRAPHY	12
Elective Subjects:	
ABORIGINAL STUDIES – AGRICULTURE	13
CHILDS STUDIES – COMMERCE	14
COMPUTING TECHNOLOGY – DRAMA	15
FOOD TECHNOLOGY – GEOGRAPHY (ELECTIVE)	16
GRAPHICS TECHNOLOGY – HISTORY (ELECTIVE)	17
INDUSTRIAL TECHNOLOGY (METAL) – INDUSTRIAL TECHNOLOGY (TIMBER)	18
INDUSTRIAL TECHNOLOGY (MULTIMEDIA) – iSTEM	19
PHYSICAL ACTIVITY and SPORT STUDIES – MUSIC	20
PHOTOGRAPHY and DIGITAL MEDIA – TEXTILES TECHNOLOGY	21
VISUAL ARTS	22
My Plan	23

From the Principal's Desk

The selection of subjects for Stage 5 is a very important decision for students and parents/carers. Students should select subjects they enjoy, have an interest in and believe they will do well in for Years 9 and 10.

It is important for students to select subjects they enjoy. Experience has shown us that if students enjoy the subjects they are studying, they are more likely to achieve good results.

Students should consider that their interests come first and should avoid selecting subjects:

- based on what their friends are doing,
- because they heard the subject was easy,
- for the teacher they think might be teaching a certain subject.

It is important for students to give their initial subject selection decisions a lot of consideration. Although changing a subject is possible, changing a subject after a course has commenced can place the student at a distinct disadvantage, as they will be behind the other students completing the course. Changes to subjects can only take place in the first three weeks of the course. Electives cannot be changed after this time due to the NESA requirements for a Record of School Achievement (RoSA).

High demand electives will fill quickly, so it is important that Elective Choice Sheets are returned promptly.

Parents and carers should also consider the fees attached to some electives. If students select electives with fees, payment of these fees will be required.

Students will be asked to complete an Elective Choice Sheet in Week 9 (Term 3). We recommend that you record your choices at the back of this booklet to help you with this. A parent/caregiver signature is required to indicate that students have discussed their subject choices at home.

We hope the process of choosing your electives for Stage 5 is an exciting one. Selecting electives gives students greater control over their pattern of study.

M Waugh

Principal

Introduction

This Stage 5 Course Selection Guide contains essential information about selecting Stage 5 courses offered at Mount Austin High School.

Changes to the information contained in this guide will be issued to students in writing and updated versions will be published electronically.

All students entering Year 9 and 10 at Mount Austin High School are required to study

- English,
- Mathematics,
- Science,
- both History and Geography (*for alternating semesters in both Years 9 and 10*), and
- Personal Development, Health and Physical Education.

Students are required to study two elective subjects. These subjects are listed on pages 10-22.

We cannot guarantee that all elective subjects listed will run as this is dependent on sufficient students wanting to study a particular subject. We are therefore asking students to list their first five preferences. We will use the students' five top choices to establish the subject lines and their selections.

Parents and carers are urged to discuss the subject offerings with their child. Students should choose courses which they are interested in and not limit their elective choices in Years 9 and 10 to the areas they think they might wish to pursue in senior years. Students do not necessarily have to choose a subject in Year 9 and 10 in order to study that subject in the Senior College.

Please note that:

1. The NSW Education Standards Authority (NESA) and the Department of Education set these course expectations.
2. Satisfactory participation in a minimum of two electives is required for Years 9 and 10. Students should ensure that they choose carefully as there will be little or no opportunity to make changes to these selections.

Record of School Achievement (RoSA)

The RoSA is a cumulative credential and contains a student's record of academic achievement up until the date they leave school. All students who complete the requirements for Year 10 will be eligible for their RoSA.

The RoSA is issued by the NSW Education Standards Authority (NESA) when the student leaves school. Students must meet the NESA requirements to successfully complete Year 10.

Each school awards a school-based grade based on the tasks each student produces (A-E). Students who do not meet the requirements for courses will be awarded an N-Determination (N) and may not be eligible to begin Year 11. Students (and their parents or carers) will receive written notifications (warning letters) if they are at risk of not meeting the requirements for their RoSA.

Subject Selections Process

Course Selection Timeline:

Term 3 in Year 8 Wellbeing	Email to students, parents, and carers regarding Stage 5 course information and e-version of the guide
Term 3, Week 8	Year 8 – Year Assembly subject selection is discussed, and printed guides issued
Term 3, Week 9	6pm: 19 th September 2023 Information evening – subject selection forms issued
Term 4, Week 5 (to commence 2024)	Start of 2024 - Stage 5 timetables issued

Course selections will be finalised electronically in Term 4.

Students are not guaranteed all their choices. Class formation is dependent on a number of factors including the number of students who have chosen the course, and staff and classroom availability.

Students complete the Plan for Course Selection on the last page of this guide. For further information contact Mr A. Donaldson, Head Teacher Transition on 02 6925 2801.

Fees

If a student chooses to enrol in a course that has a subject fee, prompt payment is required to secure a place and to ensure resources can be supplied to maximise the course learning opportunities. Students who are unable to cover expenses should speak to the Head Teacher of the subject. Where possible, the school confidentially supports students in cases of hardship.

ELECTIVE SUBJECTS FEE TABLE

Aboriginal Studies	Nil
Agriculture	\$20
Child Studies	\$30
Commerce	Nil
Computing Technology	\$30
Drama	\$10
Food Technology	\$75
French	Nil
Geography	Nil
Graphics Technology	\$10
History (Elective)	Nil
Industrial Technology (METAL)	\$60
Industrial Technology (TIMBER)	\$60
Industrial Technology (MULTI MEDIA)	\$20
iSTEM (Integrated Science, Technology, Engineering and Maths)	\$25
PASS (Physical Activity and Sport Studies)	\$70
Music	\$20
Photography and Digital Media	\$20
Textiles Technology	\$25
Visual Arts	\$40

Classes and Timetables

Individual student timetables are issued at the beginning of each year, or when there is a need to change timetables. These timetables can also be viewed online through the School Portal.

Students only attend the classes on their timetable. It is very important that each student ensures that their timetable is correct as this is the school's formal record of each student's courses.

High Potential Classes

Mount Austin High School has high potential classes, which are a program of learning designed to enrich and extend students. The classes address students identified as having high potential across a range of key learning areas including English, Mathematics, Science and Humanities.

These classes provide students with extended opportunities to develop their academic potential. The expectation is that students in this class: achieve at or above stage level; demonstrate application and commitment to learning in all subject areas; invest in their academic future and education potential; and maintain their school and class attendance at or above 90%.

Life Skills - Program of Study

Students with additional educational needs, which prevent them from successfully accessing regular courses, are eligible to study Life Skills courses. The school offers a range of Life Skill courses.

Life Skills syllabuses are followed to help students achieve outcomes appropriate to their identified needs. Placement into Life Skills courses is ONLY made through an interview with the Learning and Support Team.

Students in a support class in the Special Education faculty are placed by a regional panel. Special Education students will only access Life Skills courses in negotiation with parents and carers based on student academic needs.

Sport

The Department of Education requires students to participate in a minimum of 150 minutes of planned moderate to vigorous physical activity across the school week.

Sport occurs on a Tuesday afternoon for all students in years 7 to 10. Sport selections take place each term, with a variety of sports and interest activities on offer.

All students are expected to participate in the Athletics, Swimming and Cross-Country Carnivals.

Mount Austin High School students also have the opportunity to participate in inter-school sports through Combined High Schools' competitions, Wagga District carnivals, Riverina and state carnivals and Gala Days. Students who wish to represent the school need to adhere to and sign the sports contract provided by the coach. Parental permission is required for representative sports. To participate in representative sport, students must adhere to the MAHS Sport – Code of Conduct.

Assessment

Students will recognise that assessment of their work is serious and must be fair for all students. Every student must be informed of requirements and be rewarded for their efforts.

It is very important that students have a clear understanding of the assessment requirements for each of their courses. A Stage 5 Assessment Schedule is published at the commencement of each school year. Additionally, students will be provided with formal assessment notifications two weeks prior to the due date for each of their Stage 5 assessment tasks.

The Stage 5 Assessment Schedule is issued to each student as evidence that they have been informed of the assessment requirements and procedures. When published, this document will be available on the School Portal and website.

Assessment tasks can be in various forms. Examples of task types considered appropriate for formal assessment in Stage 5 include, but are not limited to:

- Topic tests
- Examinations
- Presentations – digital, oral, multimodal
- Reports – analytical, fieldwork, research, written
- Practical work – experiments, improvisation, projects, performances
- Portfolios, journals, logbooks, process diaries
- Compositions
- Groupwork tasks

A formal assessment task may contain more than one part.

Changing Courses

Courses should be carefully chosen. Students cannot change their mind after handing the choice sheet in. If a student decides that they need to change an elective course after having commenced study in that course, the student must:

- Discuss the possible change with the relevant Year Group Deputy Principal.
- Obtain a letter from their parent/carer explaining that the student is requesting a change of Elective and provide a brief reason as to why the change needs to occur.
- Collect a “Change of course” form from the Year Group Deputy Principal who will assess whether the change can take place in consultation with the responsible Head Teacher/s.
- Take the “Change of course” form home for the parent/caregiver to sign.
- Discuss the proposed change with their Year Advisor, teachers and Head Teachers of the faculties involved and obtain the necessary signatures.
- After all signatures are obtained, return the signed form to the office for processing.
- All course changes will only be considered in the first 3 weeks of classes.

Mount Austin High School

Respect – Responsibility – Commitment



2024-2025

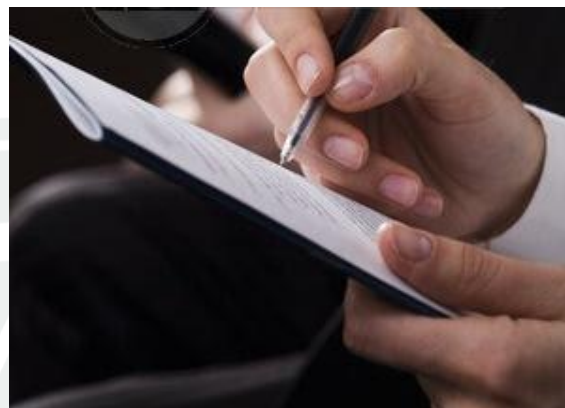
Stage 5

Courses

*The current version of this guide has been emailed to all Year 8 students.
This document can also be accessed through the parent app or downloaded from the
Mount Austin High School website.*

ENGLISH – MANDATORY

Description: The aim of English in Stage 5 is to enable students to understand and use language effectively, appreciate, reflect on and enjoy the English language and to make meaning in ways that are imaginative, creative, interpretive, critical and powerful. In their study of English, students continue to develop their critical and imaginative skills and broaden their capacity for cultural understanding.



Students engage with and explore texts that include widely acknowledged quality literature of past and contemporary societies and engage with the literature and literary heritage of Aboriginal and Torres Strait Islander peoples. By composing and responding with imagination, feeling, logic and conviction, students develop understanding of themselves and of human experience and culture. They develop clear and precise skills in speaking, listening, reading, writing, viewing and representing, and understanding of language forms and features and structures of texts.

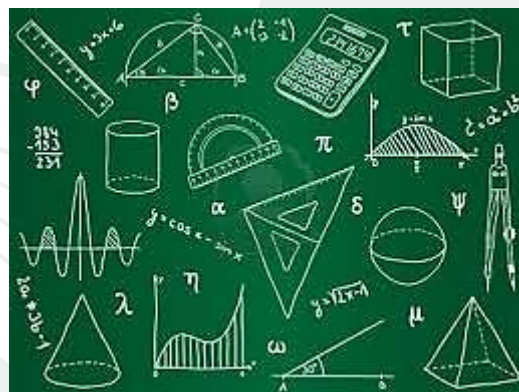
Equipment Required: Exercise book and writing materials.

Estimated Costs: Nil.

Co-ordinating Faculty: English – HT Nathan Brookes

MATHEMATICS – MANDATORY

Description: Year 9 will see the implementation of the new Mathematics syllabus which has a strong focus on working mathematically and problem-solving skills. A new Core-Paths structure has been created, offering more opportunities for students to engage and succeed. The purpose of this new structure is to ensure students are not locked into a pathway at the end of Year 8. The Core-Paths structure is designed to encourage aspiration in students and provide the flexibility needed to enable teachers to create pathways for students working towards Stage 6.



The course structure is intended to extend students as far along the continuum of learning as possible and provide solid foundations for the highest levels of student achievement. Students will build on their skills in the strands of Number and Algebra, Measurement and Space and Statistics and Probability with an overarching emphasis on building competence and confidence in communicating, understanding, fluency, reasoning and problem solving.

Assessment is carried out by class or course assignments, tests and formal examinations.

Equipment Required: A scientific calculator is essential (Casio fx82AU PLUSII is recommended).

Estimated Costs: Nil.

Co-ordinating Faculty: Mathematics – HT Amilia Gray

HISTORY – MANDATORY

Description: The Stage 5 curriculum provides a study of the history of the making of the modern world from 1750 to 1945. It was a period of industrialisation and rapid change in the ways people lived, worked and thought. It was an era of nationalism and imperialism, and the colonisation of Australia was part of the expansion of European power. The period culminated in World War I (1914–1918) and World War II (1939–1945).

The history of the modern world and Australia from 1945 to the present, with an emphasis on Australia in its global context, follows. The twentieth century became a critical period in Australia's social, cultural, economic and political development. The transformation of the modern world during a time of political turmoil, global conflict and international cooperation provides a necessary context for understanding Australia's development, its place within the Asia-Pacific region, and its global standing.



Equipment Required: An exercise book and writing materials.

Estimated Costs: Nil.

Co-ordinating Faculty: HSIE – HT Rose Mead

GEOGRAPHY – MANDATORY

Description: Geography is about the world and how people live and work. Stage 5 Geography course allows students to enjoy and take an interest in their world and its future management. They achieve this as they develop geographic knowledge, understanding, skills and values, and become informed and active citizens.



Students will undertake studies in global biomes, global population and increased urbanisation, as well as the challenges that are associated with feeding the world's growing population. Current national issues and global environments, consequences of environmental change, and management for future generations is explored.



Human wellbeing will be explored with differences in living standards and development being studied. Issues of sustainability and management of resources will come into question as the earth's population approaches eight billion. Local field studies allow students to collect information about issues such as urban salinity, water management, growth and changes in towns and give them the knowledge and skills to take action as active and informed citizens.

Geographers go into careers such as architecture, the Australian Defence Force, town planning, environmental science, park rangers, marine science, teaching, tourism, social work, international relations and overseas aid.

Equipment Required: An exercise book and writing materials.

Estimated Costs: Nil.

Co-ordinating Faculty: HSIE – HT Rose Mead

ABORIGINAL STUDIES - ELECTIVE

Description: Aboriginal Studies enables all students to gain an understanding of Indigenous peoples of Australia, their cultures and lifestyles and their contribution to Australian society.

There are ten course options which are studied. Time spent on each depends on student interest and resources available. These options are: Aboriginal Enterprises and Organisations, Aboriginal Visual Arts, Aboriginal Performing Arts, Aboriginal Peoples and the Media, Aboriginal Oral and Written Expression, Aboriginal Film and Television, Aboriginal Technologies and the Environment, Aboriginal People and Sport, Aboriginal Interaction with the Legal and Political Systems and School-developed Option.



Equipment Required: An exercise book and writing materials.

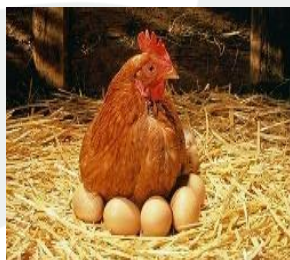
Estimated Costs: Nil.

Co-ordinating Faculty: HSIE – HT Rose Mead

AGRICULTURE - ELECTIVE

Description: The study of Agricultural Technology develops students' knowledge and understanding about a range of agricultural practices. It promotes the ability to respond to human needs and emerging opportunities. Through the course, students will conduct analysis and develop skills that will enable them to contribute positively to their own lifestyle and to the social, economic and environmental future of Australia. Agriculture students are encouraged to develop skills in order to solve problems, plan, organise and conduct scientific investigations, research, collect and organise information and work as a member of a team and communicate information to a variety of audiences.

Assessment is conducted using a range of methods including: presentations, groupwork, written reports, topic tests, research projects, self-assessment, peer assessment and practical skills.



Equipment Required: Enclosed shoes and a hat.

Estimated Costs: \$20.

Co-ordinating Faculty: TAS – HT Dustin Bradshaw

CHILD STUDIES - ELECTIVE

Description: The aim of Child Studies is to develop students' knowledge, understanding and skills to positively influence the wellbeing and development of children in the critical early years (0–8 years) in a range of settings and contexts.

Throughout the course students develop knowledge and understanding of child development from preconception to and including the early years, the skills required to positively influence the growth, development and wellbeing of children, the external factors that support the growth, development and wellbeing of children and the skills in researching, communicating and evaluating issues related to child development.

The content is organised into the following modules: Preparing for Parenthood, Conception to Birth, Family Interactions, Newborn Care, Growth and Development, Play and the Developing Child, Health and Safety in Childhood, Food and Nutrition in Childhood, the Diverse Needs of Children, Children and Culture, Media and Technology in Childhood, Aboriginal Cultures and Childhood and Childcare Services and Career opportunities.



Equipment Required: An exercise book and writing materials.

Estimated Costs: \$30

Co-ordinating Faculty: PDHPE – HT Michael Dare

COMMERCE - ELECTIVE

Description: Commerce is an exciting course that looks at living in a changing, modern consumer society.

It teaches things like writing cheques, using electronic banking services, keeping records, making investment decisions, voting, buying shares, running a small business and understanding the law. Most of these things are taught through hands-on experience.



Year 9 topics studied are:

- Money
- Spending Money
- Saving and Investment
- Mass Media and the role of Advertising
- Earning money
- The Wise Consumer
- Business



Topics studied in Year 10 include:

- Voting and Government
- Trade Unions and Employee Organisations
- The Law
- Renting
- The Workforce
- Buying Cars and Houses

Commerce is a good preparation for HSC courses in Legal Studies, Business Studies and Economics.

Equipment Required: An exercise book and writing materials.

Estimated Costs: Nil.

Co-ordinating Faculty: HSIE – HT Rose Mead

COMPUTING TECHNOLOGY - ELECTIVE

Description: Studying Computing Technology in Stage 5 is designed to assist students in developing skills in the specific application of computing technologies and to develop digital solutions applicable to a range of industrial, commercial and recreational contexts. Computing Technology focuses on computational, design and systems thinking which enables students to develop their data analysis and programming (coding) skills.



Students will learn through a series of project-based learning activities. Skills are separated into two core focuses – Enterprise Information Systems and Software Development.

Within Enterprise Information Systems, students have the opportunity to learn the principles and skills of User Experience (UX) design, investigating user interface design, Augmented Reality (AR), Virtual Reality (VR) and Mixed Reality (MR) systems. They will also have the opportunity to learn concepts related to the analysis of data, such as analysing and managing large datasets as well as cyber safety, security and privacy. Students will also have the opportunity to investigate the modelling of networks and social connections including social networks, graph theory and the Internet of Things (IoT).



Assessment is primarily through comprehensive in-class projects that incorporate elements of the focus areas above. Students are also encouraged to invest time outside the classroom to pursue projects of their own interest.

Equipment Required: A computer or laptop running Windows and connected to the Internet at home is not strictly required, but strongly recommended.

Estimated Costs: \$30 with consumables for multimedia are optional extras.

Co-ordinating Faculty: TAS – HT Dustin Bradshaw

DRAMA - ELECTIVE

Description: Drama is an exciting practical subject that offers many opportunities for students to be actively involved in acting, stagecraft and theatre viewing. Students explore practical components of Drama through skill and confidence development, as well as learning to work effectively with others. This course covers performance skills, theatre history and backstage roles such as sound and lighting tasks.



Key areas for learning and assessment in Drama are:

- Making drama – participating in the creation of drama and theatre work through activities like play building and scriptwriting.
- Performing – students engage in games to develop skills as well as acting and performing.
- Appreciating drama – students engage in the viewing of a range of theatrical experiences both within school and the wider community.

This course provides excellent preparation for senior college courses requiring performance and writing skills such as Music and/or Drama. Drama is a very useful and enjoyable subject as it develops communication skills and confidence. Future careers may include Actor, costume design, light technician and working in theatre. It is also available for study in Senior College as a Higher School Certificate subject.

Equipment Required: 1 exercise book and stationery.

Estimated Costs: \$10.

Co-ordinating Faculty: CAPA – HT John Clancy

FOOD TECHNOLOGY - ELECTIVE

Description: The study of Food Technology provides students with a broad knowledge and understanding of food properties, processing, preparation and their interrelationships, nutritional considerations and consumption patterns.

This subject addresses the importance of hygiene and safe work practices and legislation in the production of food. It also provides students with a context through which to explore the richness, pleasure and variety food adds to life.



Equipment Required: Food container on practical days, covered shoes.

Estimated Costs: \$75.

Co-ordinating Faculty: TAS – HT Dustin Bradshaw

GEOGRAPHY - ELECTIVE

Description: Do you have a particular interest in ANY area of Geography? If so you can study this course in addition to your mandatory course.

The Geography (Elective) course provides students with the opportunity for additional learning through engagement with additional Geography content. It provides students with a broader understanding of the discipline of Geography and the processes of geographical inquiry, and enables depth studies through flexible programming of focus areas.

Some Focus Areas to choose from: Oceanography, which focuses on the features and importance of the world's oceans and issues associated with them. Physical Geography, where students study the geographical processes that form and transform the physical world. Geography of Primary Production the patterns, functions and issues associated with primary production and School-developed Option, this elective provides students with the opportunity to develop their geographical knowledge and understanding of a particular location and/or area of inquiry that caters for their interests, needs and resources.

Equipment Required: An exercise book and writing materials.

Estimated Costs: Nil.

Co-ordinating Faculty: HSIE – HT Rose Mead



INDUSTRIAL TECHNOLOGY (METAL) - ELECTIVE

Description: The Industrial Technology Metal area provides opportunities for students to develop knowledge and understanding of materials and processes associated with the metal and manufacturing and engineering industries. Knowledge and skills are developed through a specialised approach to the tools, materials and techniques related to general metalwork. These are enhanced and further developed through the study of specialist modules in Metal Machining and Fabrication. Students will be provided with a range of theoretical and practical experiences and undertake project work.



Practical projects will reflect the nature of the Metal focus area and provide opportunities for students to develop specific knowledge, understanding and skills associated with metal-related technologies.

These may include:

- Fabricated Projects
- Metal Machining Projects
- Sheet Metal Products
- Artistic Metal Projects.

This course provides excellent preparation for senior college courses requiring design and production aspects. Students interested in careers in Manufacturing and Engineering, Building and Construction and other Metal and Timber based trades, or TAS Teaching will benefit from this course.

Equipment Required: Enclosed leather shoes / work boots.

Estimated Costs: \$60.

Co-ordinating Faculty: TAS – HT Dustin Bradshaw

INDUSTRIAL TECHNOLOGY (TIMBER) - ELECTIVE

Description: The course provides opportunities for students to develop knowledge, understanding and skills in the use of tools, materials and techniques related to timber. Students have further opportunities to explore specialist timber technologies such as cabinetwork and wood machining. Hands on practical skills are highlighted in this course and skill development is a focus area.

Students have opportunities to engage with practical projects relevant to their strengths, needs and interests and will be drawn from one or more of the following suggested timber-related contexts:

- furniture items
- decorative timber products
- storage and transportation products
- small bowls or turned items
- storage and display units.



This course provides excellent preparation for senior college courses requiring design and construction aspects. Students interested in careers in Manufacturing and Engineering, Building and Construction and other Metal and Timber based trades, or TAS Teaching will benefit from this course.

Equipment Required: Enclosed leather shoes / work boots.

Estimated Costs: \$60.

Co-ordinating Faculty: TAS – HT Dustin Bradshaw

INDUSTRIAL TECHNOLOGY (MULTIMEDIA) - ELECTIVE

Description: Studying Multimedia in Stage 5 is ideal for students looking to develop knowledge, understanding and skills in multimedia, photographic and graphics design industries.

The core content of Multimedia focuses on Website Design and Video Production, with a range of specialist optional modules that students can select from such as Apps and Interactivity, and Games and Simulations. Development of these skills and knowledge is largely driven by the creation of practical projects and direct use of the skills required.

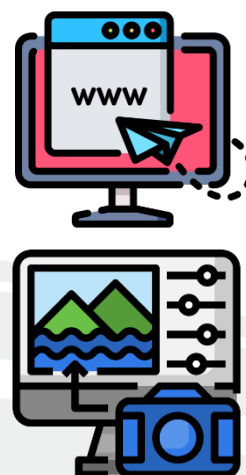
Assessment is completed alongside these practical projects and submission of these works and matching portfolios constitutes most of their grading over the two years.

Students should pick Multimedia if they want to specifically target the content creation and website, video and application development aspects of computer use. Students seeking broader knowledge of computers in general with small parts of multimedia should consider Information and Software Technology (IST) instead.

Equipment Required: A computer or laptop running Windows and connected to the Internet at home is not strictly required, but strongly recommended. All required software is available for free.

Estimated Costs: \$20 with consumables for students' own extra projects are optional.

Co-ordinating Faculty: TAS – HT Dustin Bradshaw



INTEGRATED SCIENCE, TECHNOLOGY, ENGINEERING AND MATHS (iSTEM) - ELECTIVE

Description: This course is iSTEM. These disciplines are important for the future economic and social well-being of Australia and cannot be underestimated. International research indicates that 75 percent of the fastest growing occupations require STEM skills and knowledge.

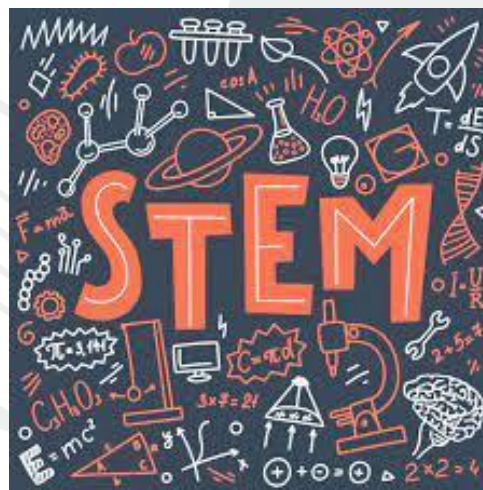
Students have the option to participate in a variety of competitions and STEM based intervention programs during the course. Students will also study a variety of themed units of work focusing on the application of science, technology, engineering and mathematics to real life, through inquiry-based learning techniques.

STEM topics include 3D CAD/CAM modelling and printing, Mechatronics (Arduino, robotics Lego EV3 and programming) Engineering, Architecture, Aerodynamics (designing planes and car), Biomedical innovations (3D printed organs, drone deliveries) and motion (alternative energy and rockets).

Equipment Required: 240-page A4 notebook and writing materials.

Estimated Costs: \$25.

Co-ordinating Faculty: Science HT – Aleasha Lyons



PHYSICAL ACTIVITY AND SPORT STUDIES (PASS) - ELECTIVE

Description: PASS represents a broad view of physical activity and the many possible contexts in which individuals can build activity into their lifestyle. It incorporates a wide range of lifelong physical activities, including recreational, leisure and adventure pursuits, competitive and non-competitive games, individual and group physical fitness activities, and the use of physical activity for therapy and remediation.

PASS promotes the concept of learning through movement. Aspects of the course can be explored through participation in selected movement applications in which students experience, examine, analyse and apply new understanding. Physical Activity and Sports Studies also promotes learning about movement and provides students with opportunities to develop their movement skills, analyse movement performance and assist the performance of others. Students develop an appreciation of the traditions and special characteristics associated with various physical activities.



Equipment Required: An exercise book and writing materials.

Estimated Costs: \$70.

Co-ordinating Faculty: PDHPE – HT Michael Dare

MUSIC - ELECTIVE

Description: Music is a practical subject that offers many opportunities for students to be actively involved in performing, composing and listening to music throughout the course. Students are expected to learn an instrument of their own choice and/or sing. Students are required to perform in class and, if possible, seek private tuition outside of school hours to continue to develop their skills.



Students will engage in performing, composing and listening. Areas of study include:

- One mandatory topic Australian Music plus at least four other topics will be studied over the two years.
- Other topics may include: Music of a Culture, Classical Music, Popular Music, Music for Radio, Film, TV and Multimedia, Music Technology as examples.

This course provides excellent preparation for senior college courses requiring performance skills. Students interested in careers in television, radio, theatre, events as performers, which includes roles such as Sound Technician, Musician, Music / Film Post-Production and even CAPA Teaching as examples may benefit from this course. Study of Music is also available in Stage 6 as a Higher School Certificate subject.

Equipment Required: own instrument useful but not essential, 1 music exercise book and stationery.

Estimated Costs: \$20.

Co-ordinating Faculty: CAPA – HT John Clancy

PHOTOGRAPHY and DIGITAL MEDIA - ELECTIVE

Description: Students who select this subject explore the nature of photographic and digital media as an important field of artistic practice, conceptual knowledge and technological procedures. Much knowledge of the world and notions of cultural and self-identity come from photographic and digital images such as television, film, video, Internet, mass media and multimedia.

This course provides students with an introduction to photographic and digital media forms including both modern and traditional technologies. Study of this course incorporates print, interactive and moving forms. Areas of study may include:

- aspects of composing an image, printing 'wet' chemical and traditional photographs in the Dark Room
- the use of the film and digital cameras manipulating images both manually and electronically
- creating and using film and movie editing programs
- studying the critical and historical aspects of this form of art.



This course provides comprehensive practical preparation for senior college courses requiring design aspects such as Visual Design, Visual Arts, Photography, Video and Digital Imaging. Students interested in careers in Photography, Design, Gaming, Marketing, Nail Art and other Digital Media may benefit from selecting this course. The study of Photography is also offered in Stage 6 as a Higher School Certificate Content Endorsed Course.

Equipment Required: 1 visual arts diary and stationery.

Estimated Costs: \$20.

Co-ordinating Faculty: CAPA – HT John Clancy

TEXTILES TECHNOLOGY - ELECTIVE

Description: This course provides students with broad knowledge of the properties, performance and uses of textiles. It involves project work that includes investigation and experimentation that will enable students to discriminate in their choices of textiles for particular uses. Students will document and communicate their design ideas and experiences and make use of contemporary technology in their project work. Completion of projects is integral to developing skills and confidence in the manipulation and use of a range of textile materials, equipment and techniques.



shutterstock.com · 1012979371

Students will be challenged to transfer knowledge to new situations and projects, building on technical skills and past experiences. Textile projects will give students the opportunity to be creative, independent learners and to explore functional and aesthetic aspects of textiles, demonstrate responsibility in decision-making and encourage individuals to express ideas and opinions.

Equipment Required: Students will be required to bring in their own materials for projects at times.

Estimated Costs: \$25.

Co-ordinating Faculty: TAS – HT Dustin Bradshaw

VISUAL ARTS - ELECTIVE

Description: Students will explore the expressive properties of particular forms, materials and techniques to give form to a variety of subject matter in artworks through written and oral work that explores the significance of subject matter in artworks from diverse viewpoints.



Students undertaking this course should have a keen interest in the arts and be willing to devote the time necessary to the completion of works. The Visual Arts course is made up of:

- practical artmaking
- critical and historical study.

This course provides excellent preparation for senior college courses requiring design aspects. Students interested in careers in Art could be a Visual Merchandiser, Screen Printer, Hair or Beauty, Marketing, Jeweller and/or CAPA Teaching may benefit from this course. Study of Visual Arts is also available in Stage 6 as a Higher School Certificate subject.

Equipment Required: Apron, 1 Visual Arts Diary and stationery (including coloured pencils, pen and a ruler).

Estimated Costs: \$40.

Co-ordinating Faculty: CAPA – HT John Clancy

My Plan

Name: _____

Stage 5 Elective Planning Sheet

The following courses are compulsory in Stage 5 (Years 9 and 10): English, Mathematics, Science, PDHPE, History, and Geography.

In addition, there is an expectation that every student will complete either 100 or 200 hour elective courses. Each of these electives will be included on a student's Record of Student Achievement (RoSA). The successful completion of an elective in Year 9 and 10 is the best possible preparation for Year 11 and 12 as well as for TAFE and further training.

The 2024-25 elective lines will be based on the choices provided by students. High demand electives tend to fill quickly. Submit your form to the front office.

Select your top five choices. Back-ups are required if the course doesn't run or is full.

MY PLAN – select your top five choices.

Elective Choice One: _____

Elective Choice Two: _____

Elective Choice Three: _____

Elective Choice Four: _____

Elective Choice Five: _____

Parent/Carer Signature: _____ Parent/Carer Phone: _____

Administration only:

Date received: _____ Number: _____ By whom: _____